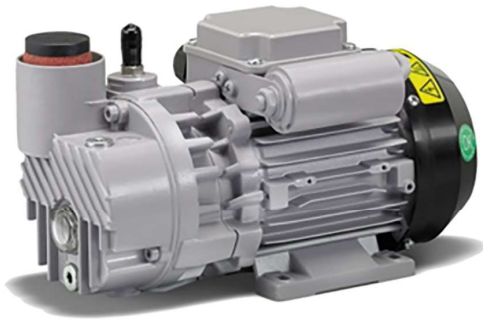


# ROTOMIL'S K



Single stage oil sealed rotary vane pump with an end vacuum of 2 mbar and high and stable pumping speed.

- Compactness and noise level optimized for an easy integration in machines
- Available with 1-ph and 3-ph motor
- Standard built-in oil mist filter and gas ballast
- Delivered with 100% synthetic oil for heavy duty applications and long term operation
- Designed for light onsite maintenance



## Technical characteristics

	K04		K08		K12	
	50 Hz	60 Hz	50 Hz	60 Hz	50 Hz	60 Hz
Nominal flow rate m <sup>3</sup> .h <sup>-1</sup> *	4	4,8	8	9	12	14
With gas ballast	End vacuum mbar		2		2	
	Water vapor permitted maximum pressure mbar		N.A		35	
	Water vapor capacity kg.h <sup>-1</sup>		N.A		0.3	
100 % synthetic oil	MV99S		MV99S		MV99S	
Oil capacity l	0,065		0,2		0,4	
Noise level dB(A)	48	52	58	60	62	64

\* Measurements according to PNEUROP 6002 specifications - 20 °C

\* Measurements according to EN ISO 2151 - K specifications - 20 °C

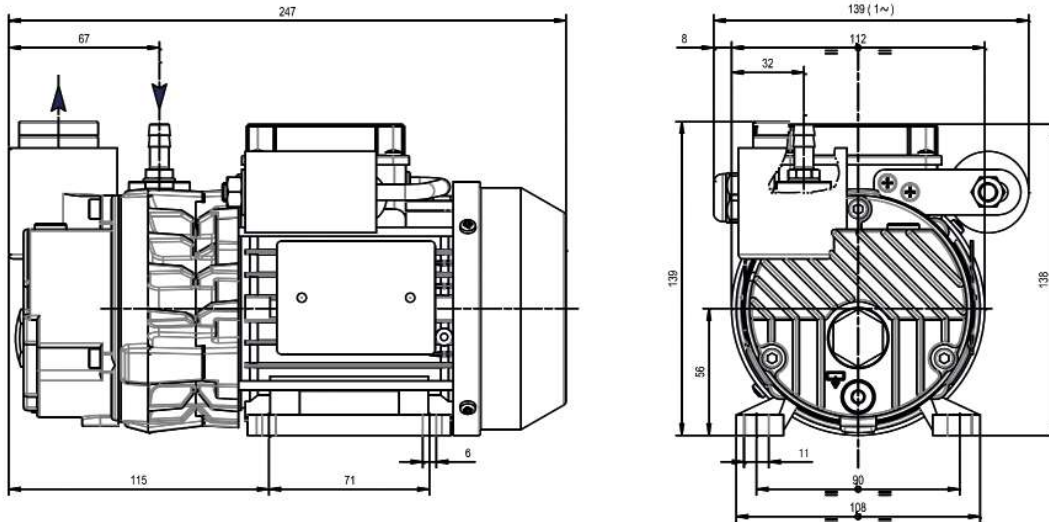
## Versions

ROTOMIL'S	K04		K08		K12		
Electrical motor	Number of phases	1	3	1	3	1	3
	Voltage V	230	230 / 400	230	230 / 400	230	230 / 400
	Period Hz	50 (60)	50 (60)	50 (60)	50 (60)	50 (60)	50 (60)
	Motor power kW	0,12 (0,15)	0,12 (0,15)	0,25 (0,3)	0,25 (0,3)	0,45 (0,55)	0,37 (0,45)
	Rotation speed min <sup>-1</sup>	2800	3300	2800	3300	2800	3300
Inlet connection	G 1/8"	G 1/8"	G 3/8"	G 3/8"	G 1/2"	G 1/2"	
Outlet connection	G 1/8"	G 1/8"	G 3/8"	G 3/8"	G 1/2"	G 1/2"	
Weight with oil kg	5,4	5,4	10	9	14	12,5	

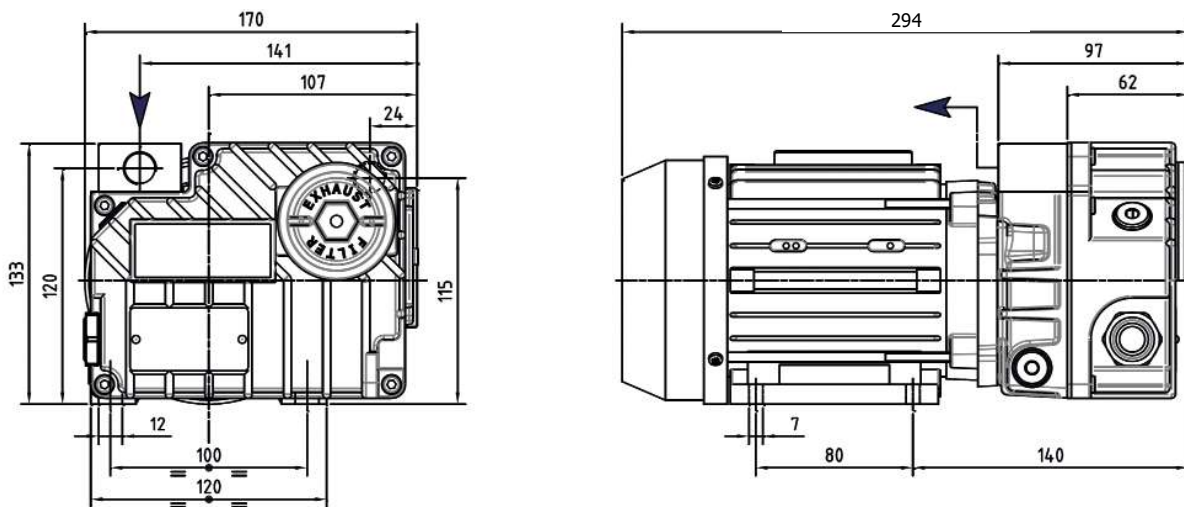
# Lubricated rotary vane vacuum pumps

## Dimensions mm (inch)

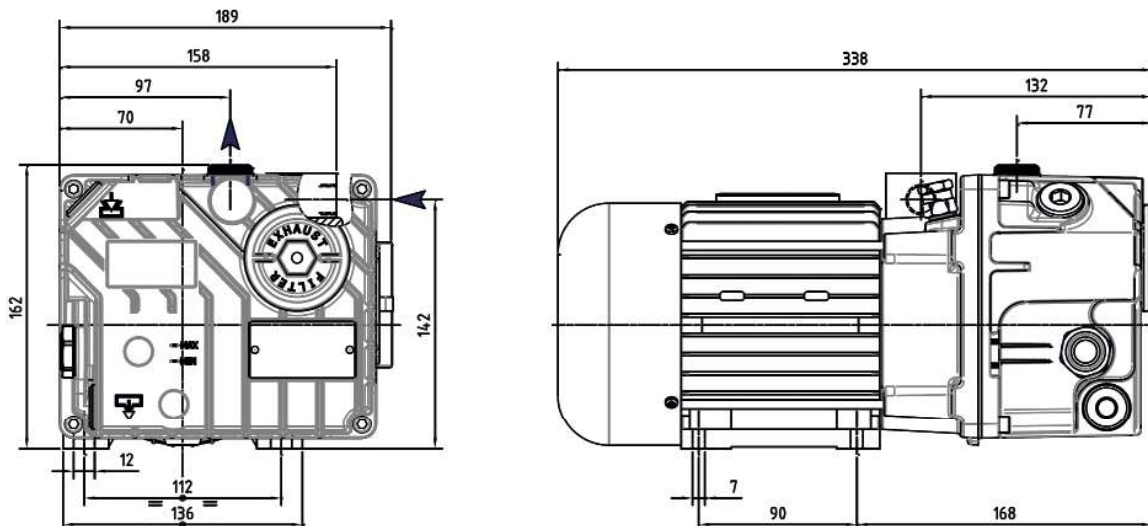
### K04



### K08



### K12



Specifications are subject to be changed without notice.



## References

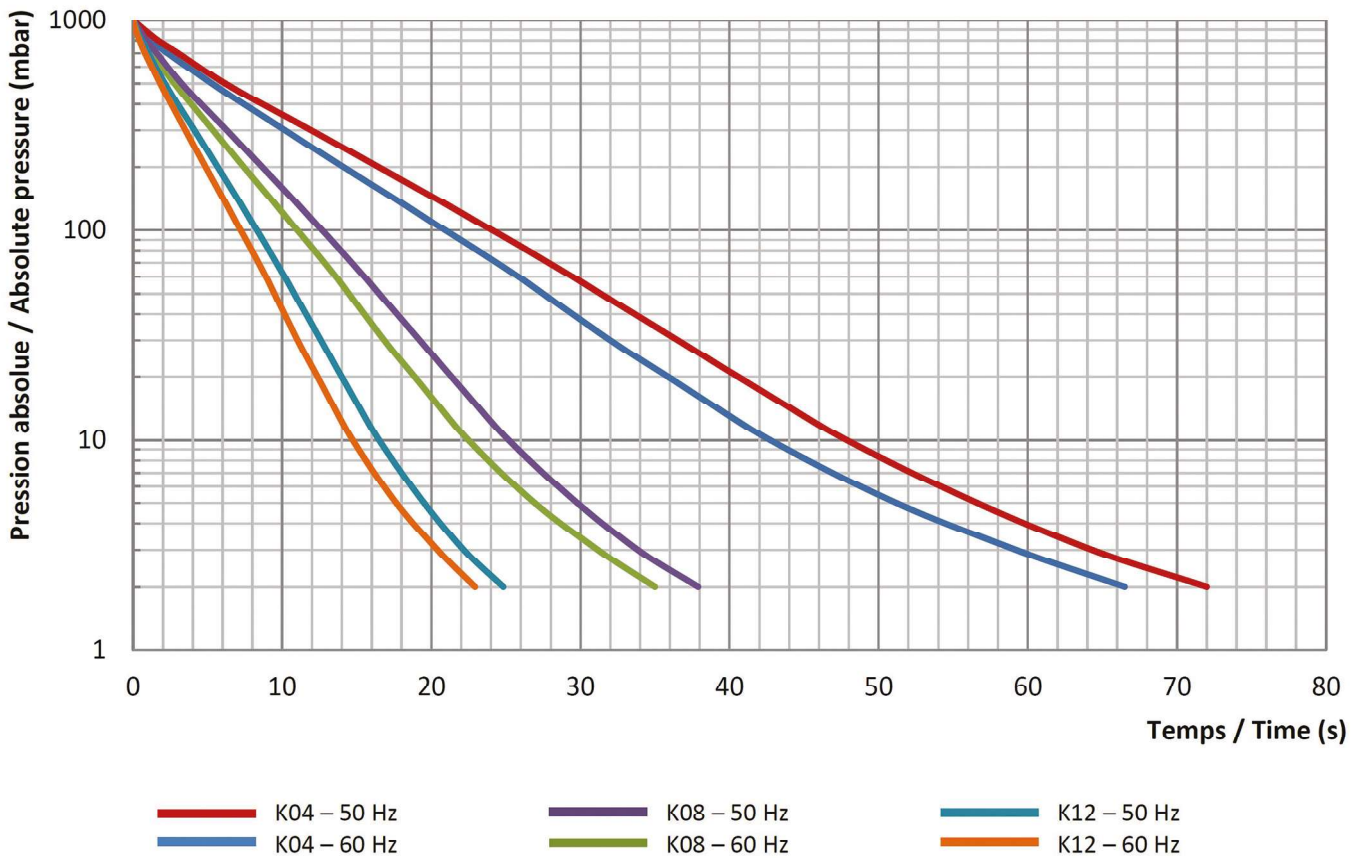
		K04	K08	K12
1-ph - 230V	50/60 Hz	824224	824226	824288
3-ph - 230 / 400V	50/60 Hz	824225	824227	824289

## Accessories

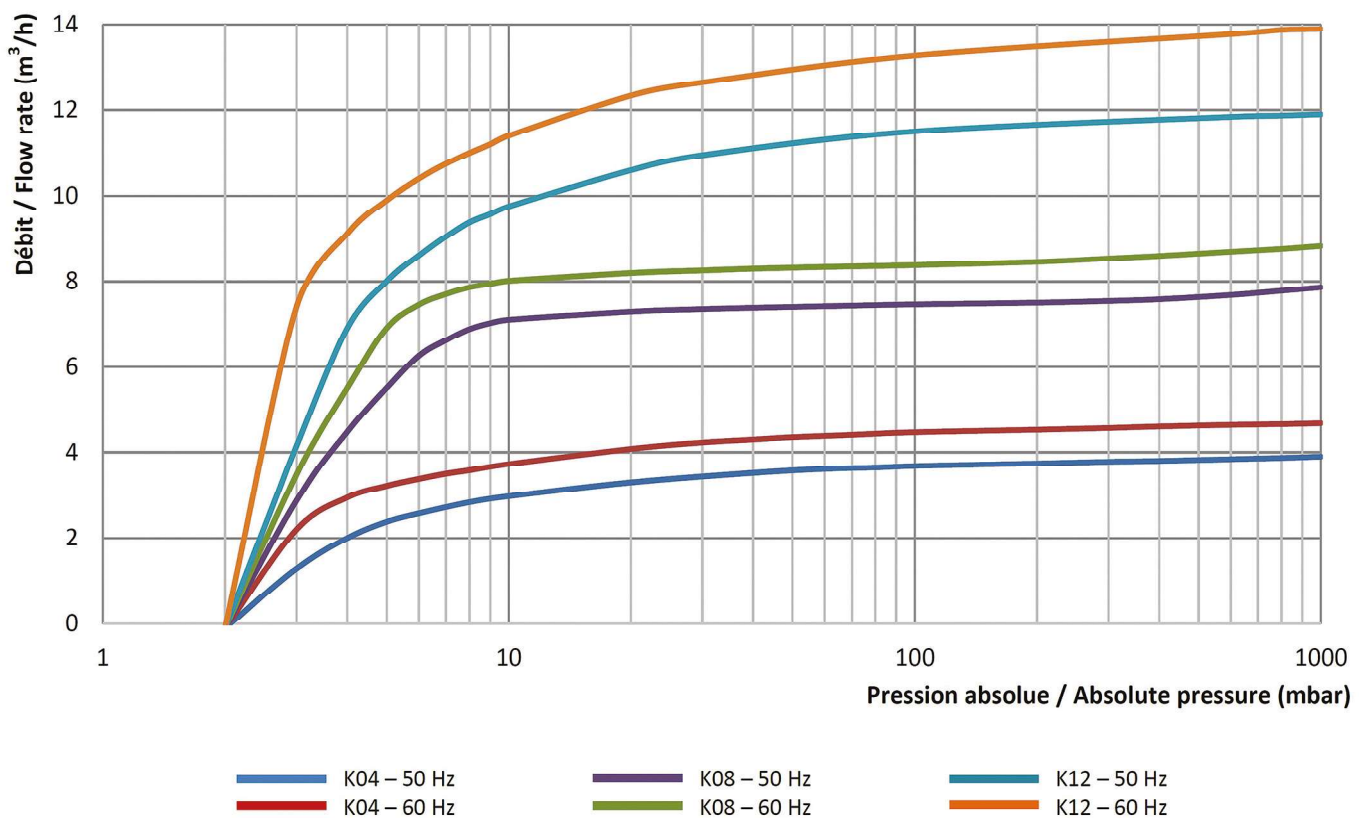
			K04	K08	K12
Inlet filter not mounted (Paper cartridge)		39PA - G3/8"	333512	333512	333512
Inlet hose MF 1/4" (l.1000 mm)			670177	670177	670177
Inlet hose MF 1/2" (l.1000 mm)			712931	712931	712931
Inlet hose MF 3/8" (l.1000 mm)			618981	618981	618981
Direct starter	without regulation	1-ph, 230V	770502	770502	770503
		3-ph, 400V	770573	770573	770573
	with regulation contact LG7	1-ph, 230V	710427	710427	710428
		3-ph, 400V	710421	710421	710421
Safety valve + vacuum gauge mounted			670069	670069	670069
Base frame assembly			670019	670019	670019
Electrical cable (3m) with plug - 1ph - 230V			363052	363052	363052

# Lubricated rotary vane vacuum pumps

## Pumping speed on 1000 l vessel



## Performance curves



Specifications are subject to be changed without notice.